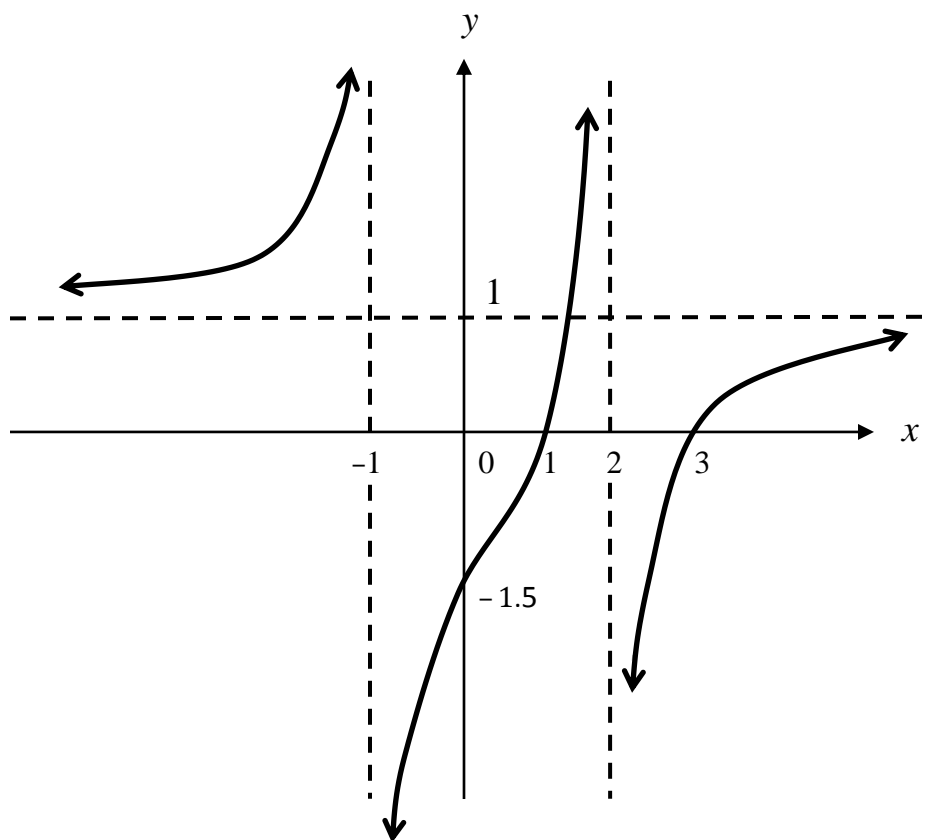


Worksheet 5

Year 13 Mathematics

Write the answers in your Exercise Book.

Study the **balanced** function shown below and then answer the questions that follow.



- (a) What are the coordinates of the **x-intercepts**? (1 mark)
- (b) What are the coordinates of the **y-intercept**? (1/2 mark)
- (c) State the equations of the **vertical** asymptotes. (1 mark)
- (d) State the equation of the **horizontal** asymptote. (1/2 mark)
- (e) The graph has the equation of the form

$$y = \frac{(x-a)(x-b)}{(x+c)(x-d)}$$

Find the values of a , b , c and d . (2 marks)