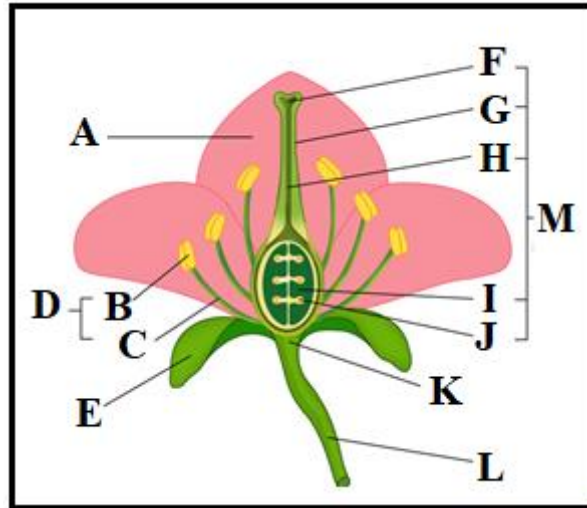


MINISTRY OF EDUCATION, HERITAGE AND ARTS
YEAR 11 BIOLOGY
REVISION WORKSHEET 8

Write the answers to the following questions in your exercise/activity books.

Structure and Function of Plants - Reproduction

1. Identify the different parts of the flower (A to M) in the diagram given below and state their functions. **(13 marks)**



Source: <https://www.sciencefacts.net/parts-of-a-flower.html>

2. Define the following terms/phrases using examples wherever possible:
- a. pollination;
 - b. cross pollination;
 - c. double fertilisation. **(6 marks)**
3. a. Define the phrase **asexual reproduction**. **(1 mark)**
 b. Identify the methods of plant asexual reproduction used to propagate the plants shown in the pictures A to E below. **(5 marks)**
 c. Briefly explain the process in any **three** methods you have named in (b) above. *(source: <http://www.pinterest.com/>)* **(6 marks)**



The End